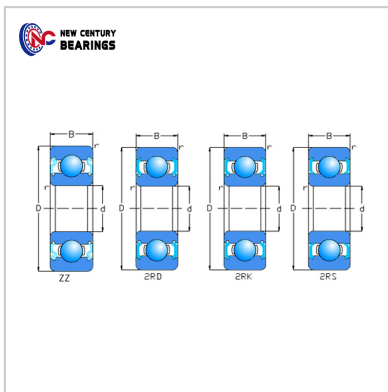
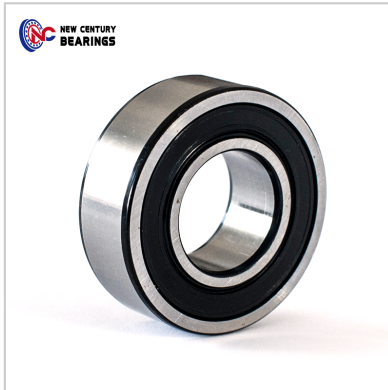


Deep groove ball bearings

Wide wall bearing-279



Part Number :	279
d :	15
D :	35
B :	13
rmin. :	0.6

Basic Load Rating(KN) :

Dynamic(Cr) :	7.75
Static(Cor) :	3.6

Limiting Speed(r/min) :

Grease :	19000
Oil :	23000
WeightKg(pc) :	0.048

: