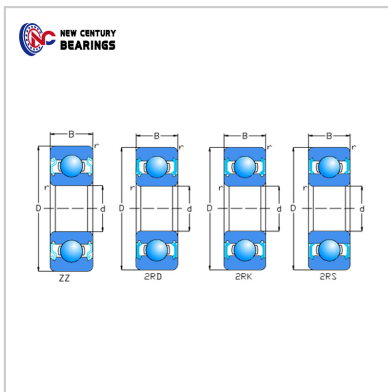
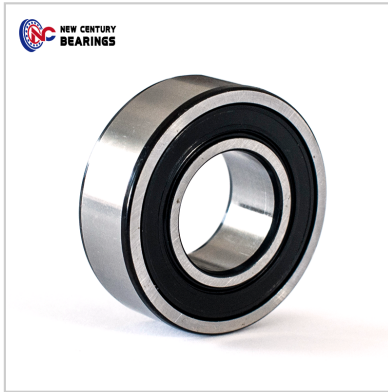


Deep groove ball bearings

Wide wall bearing-317



Part Number :	317
d :	15
D :	32
B :	11
rmin. :	0.3

Basic Load Rating(KN) :

Dynamic(Cr) :	5.6
Static(Cor) :	2.84

Limiting Speed(r/min) :

Grease :	22000
Oil :	26000
WeightKg(pc) :	0.038

: