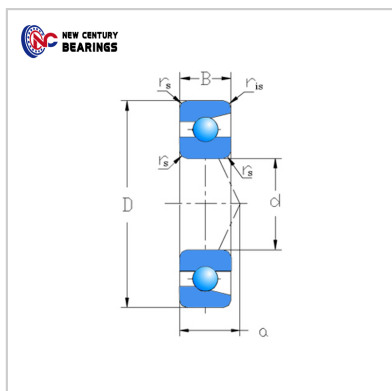
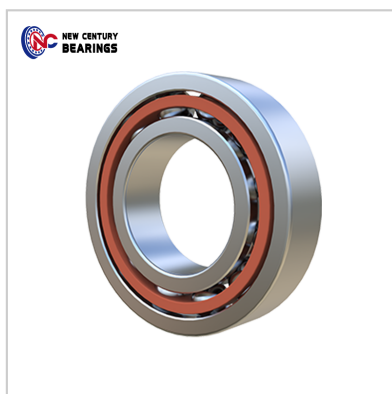


Angular contact ball bearings

Single row 72 Series-7210



Bearing Number : 7210

Boundary dimensions(mm) :

d :	50
D :	90
B :	20
r _s min :	1.1
r _{1s} min :	0.6

Basic load ratings(kN) :

Cr :	41.5
Cor :	31.5

Limiting speeds(rpm) :

Grease :	7,900
oil :	10,000
Mass(Kg) :	0.457

: