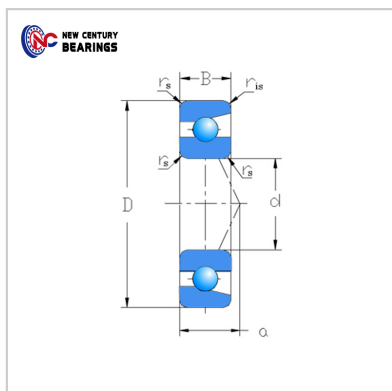
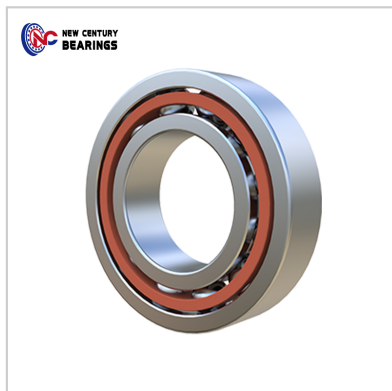


Angular contact ball bearings

Single row 72 Series-7201



Bearing Number : 7201

Boundary dimensions(mm) :

d :	12
D :	32
B :	10
rs min :	0.6
r1s min :	0.3

Basic load ratings(kN) :

Cr :	7.6
Cor :	3.95

Limiting speeds(rpm) :

Grease :	25,000
oil :	33,000
Mass(Kg) :	0.035

: