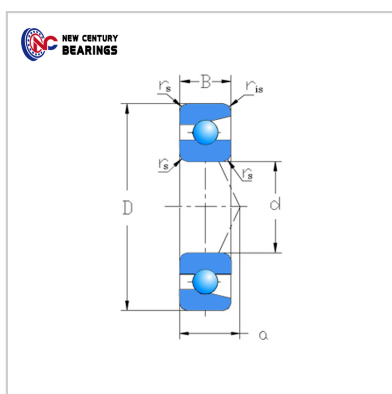
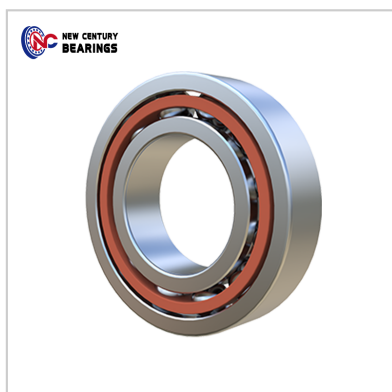


Angular contact ball bearings

Single row 72 Series-7202



Bearing Number : 7202

Boundary dimensions(mm) :

d :	15
D :	35
B :	11
r <sub>s</sub> min :	0.6
r <sub>1s</sub> min :	0.3

Basic load ratings(kN) :

Cr :	9.05
Cor :	4.7

Limiting speeds(rpm) :

Grease :	22,000
oil :	29,000
Mass(Kg) :	0.046

: