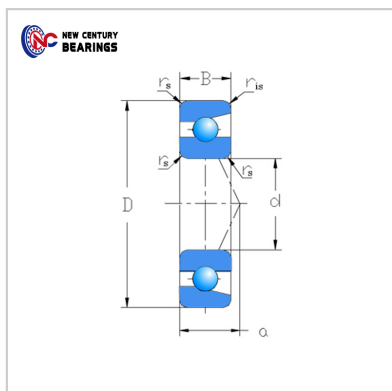
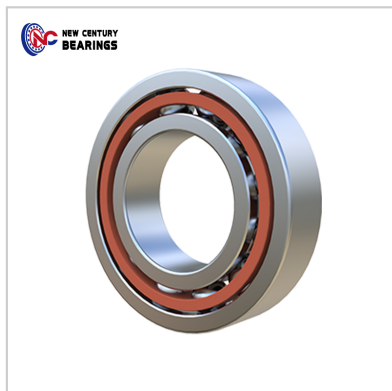


Angular contact ball bearings

Single row 72 Series-7205



Bearing Number : 7205

Boundary dimensions(mm) :

d :	25
D :	52
B :	15
rs min :	1
r1s min :	0.6

Basic load ratings(kN) :

Cr :	16.2
Cor :	10.3

Limiting speeds(rpm) :

Grease :	14,000
oil :	19,000
Mass(Kg) :	0.125

: