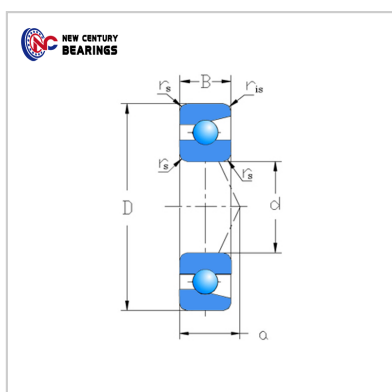
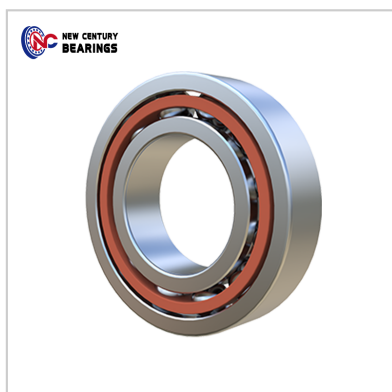


Angular contact ball bearings

Single row 72 Series-7208



:

Bearing Number :	7208
Boundary dimensions(mm) :	
d :	40
D :	80
B :	18
rs min :	1.1
r1s min :	0.6
Basic load ratings(kN) :	
Cr :	35.5
Cor :	25.1
Limiting speeds(rpm) :	
Grease :	9,600
oil :	13,000
Mass(Kg) :	0.355