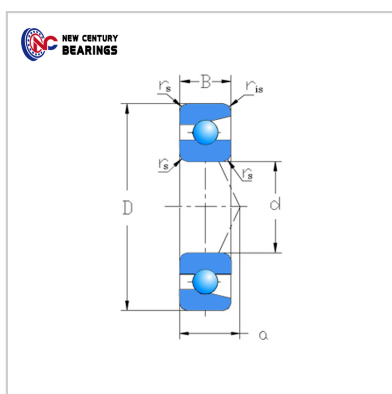
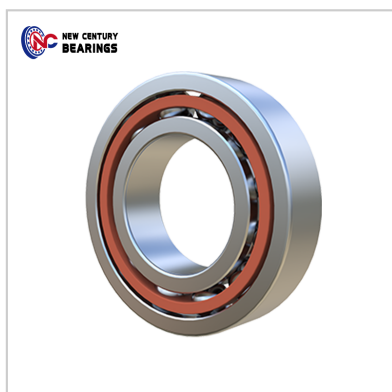


Angular contact ball bearings

Single row 73B Series-7300B



Bearing Number : 7300B

Boundary dimensions(mm) :

d :	10
D :	35
B :	11
rs min :	0.6
r1s min :	0.3

Basic load ratings(kN) :

Cr :	9.5
Cor :	4.6

Limiting speeds(rpm) :

Grease :	22,000
oil :	29,000
Mass(Kg) :	0.041

: